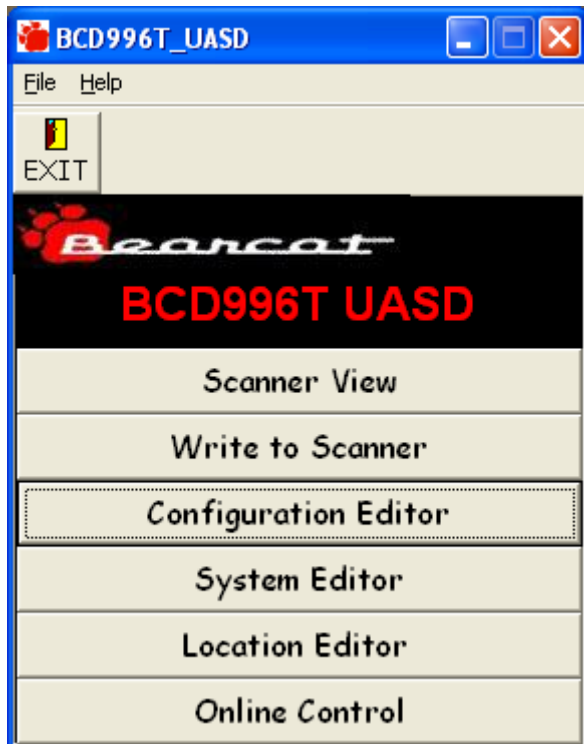


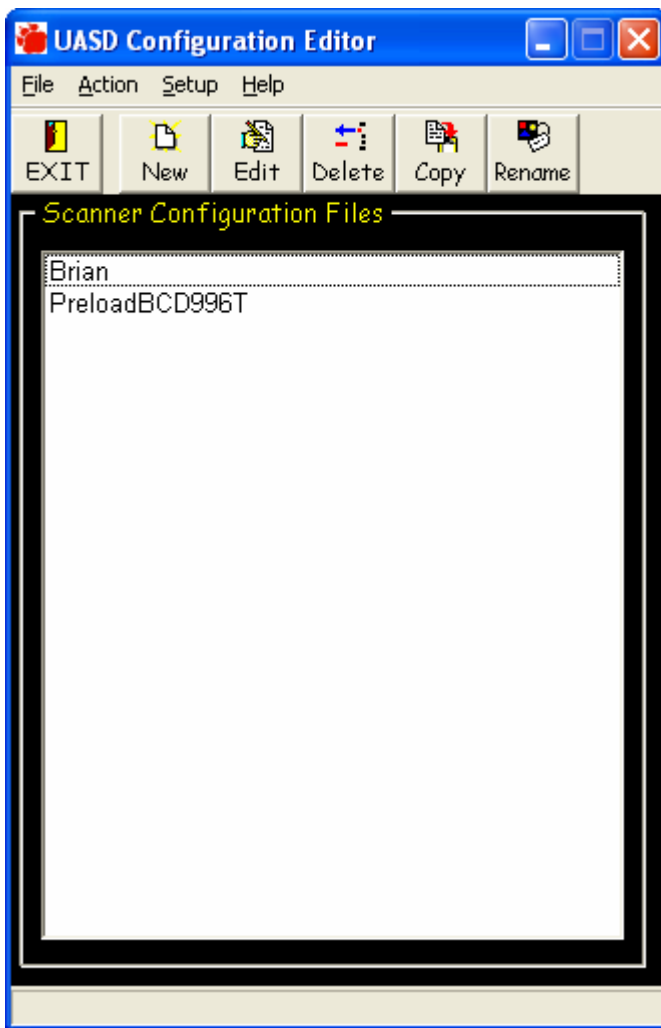
N9WP's UASD BCD996t scanner instructions (Rough Draft 1)

To use my Indiana usd files for the scanner, you will need to register your scanner at www.uniden.com and then download the UASD program and install it. You will get a registration number for the software in your email. Again, this program is free from Uniden when you register your scanner and the easiest way to program it.

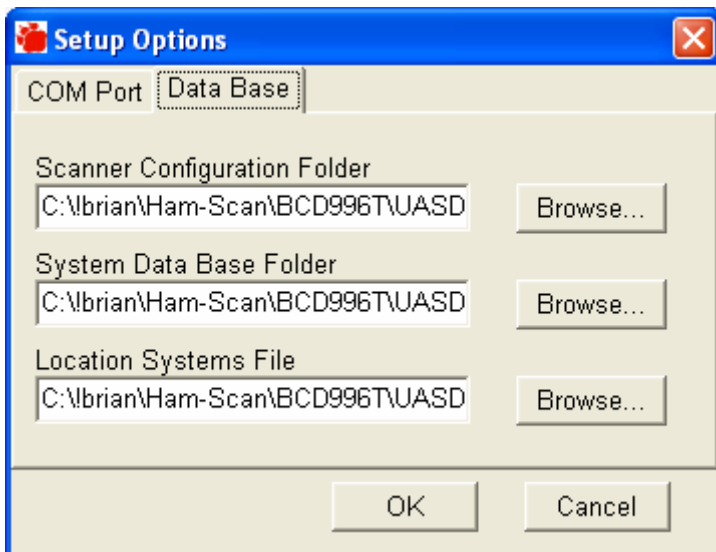
Open up the BCD996T_UASD program:



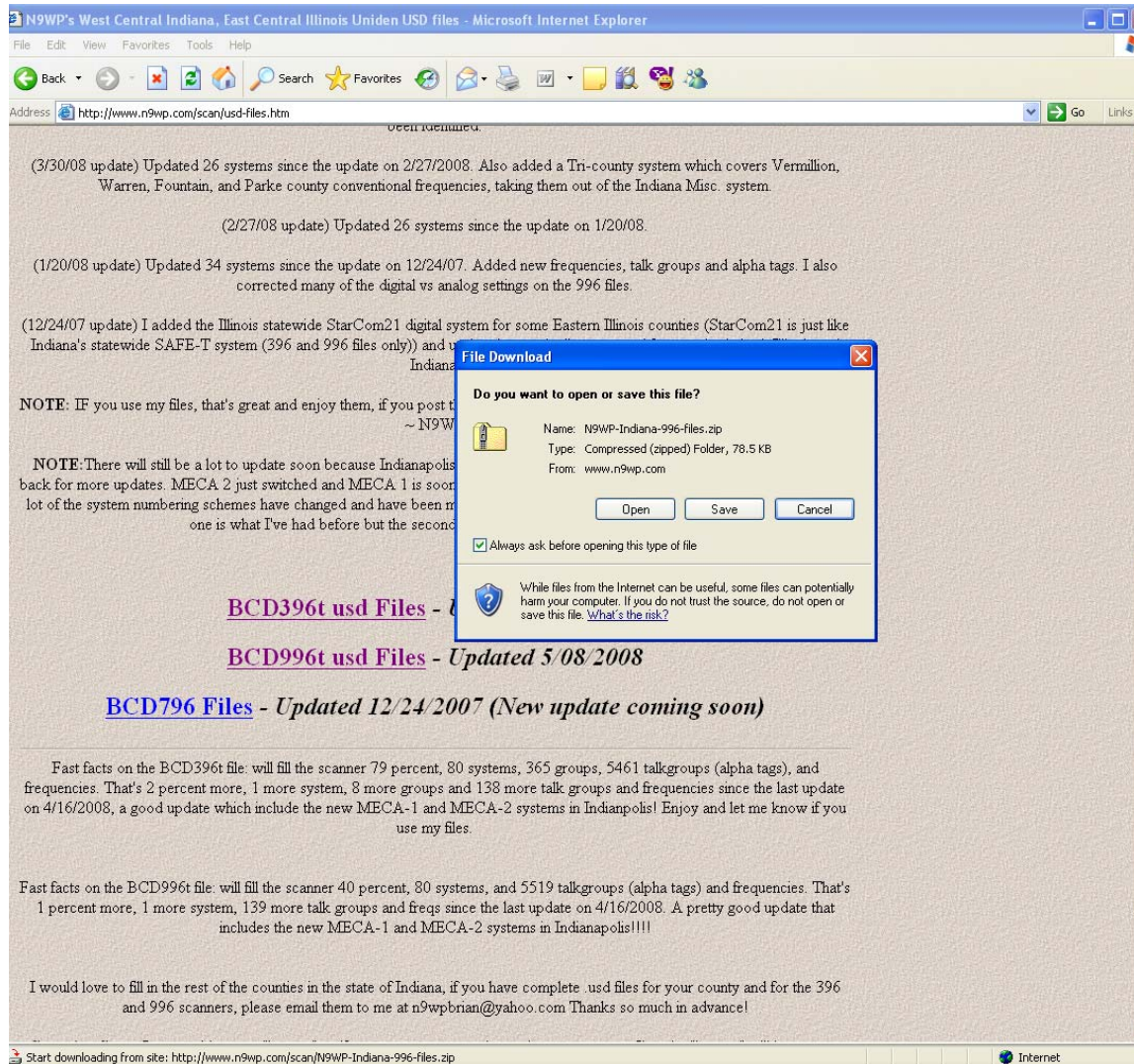
Click on Configuration Editor:



Click on Setup in the menu then click Options

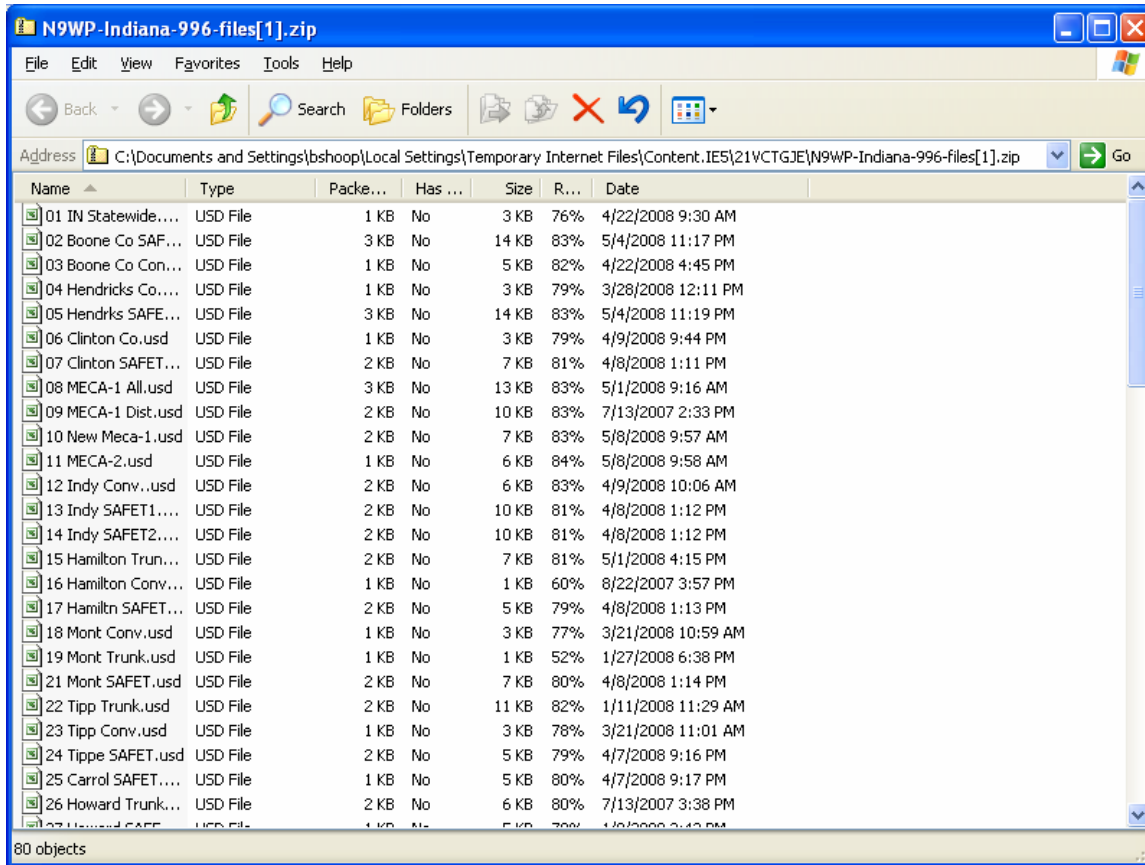


Both the Scanner Configuration Folder and the System Data Base Folder need to point to the correct places. System Data Base Folder need to point to where the files you've downloaded from my webpage. Those files that you downloaded need to be unzipped or extracted. Clicking the BCD996t usd files link should pop up a box that looks like this:

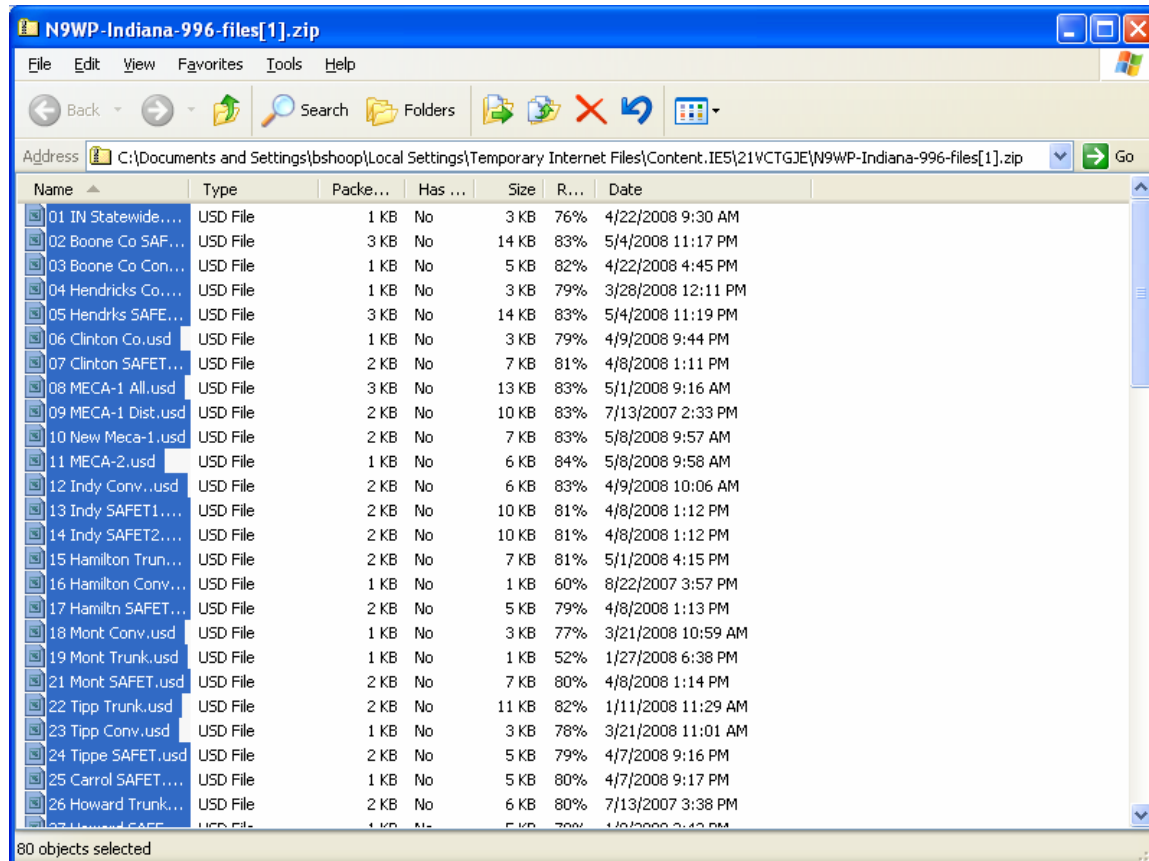


Another way to download my files from the webpage is to right click on the link and select “Save Target As” and put them where you will remember where they are at. You will have to use winzip or extract those files before you can use them in the UASD Program.

If you chose the first method, clicking Open will look like this:



Now lets select all the files in this window by clicking Edit in the menu and then Select All:

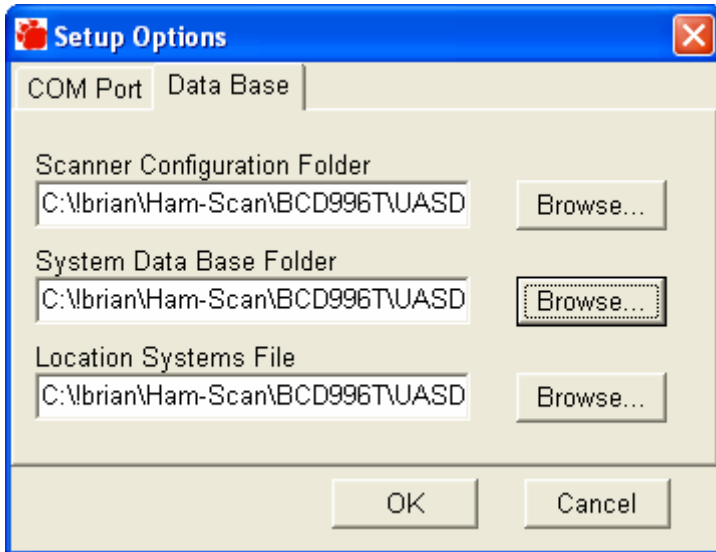


Click Edit in the menu and select Copy. Now you want to paste those files in a place that you can get to them and remember where they are at.

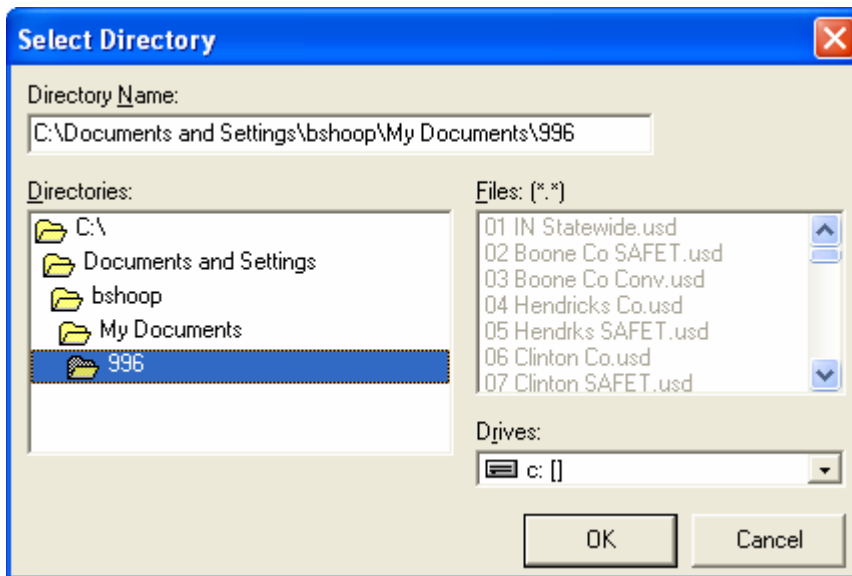
I went to My Documents and created a folder called 996 and pasted the files in there.

The path is C:\Documents and Settings\bshoop\my documents\996

Now back to the 996 program and the Configuration under the Setup menu and options:

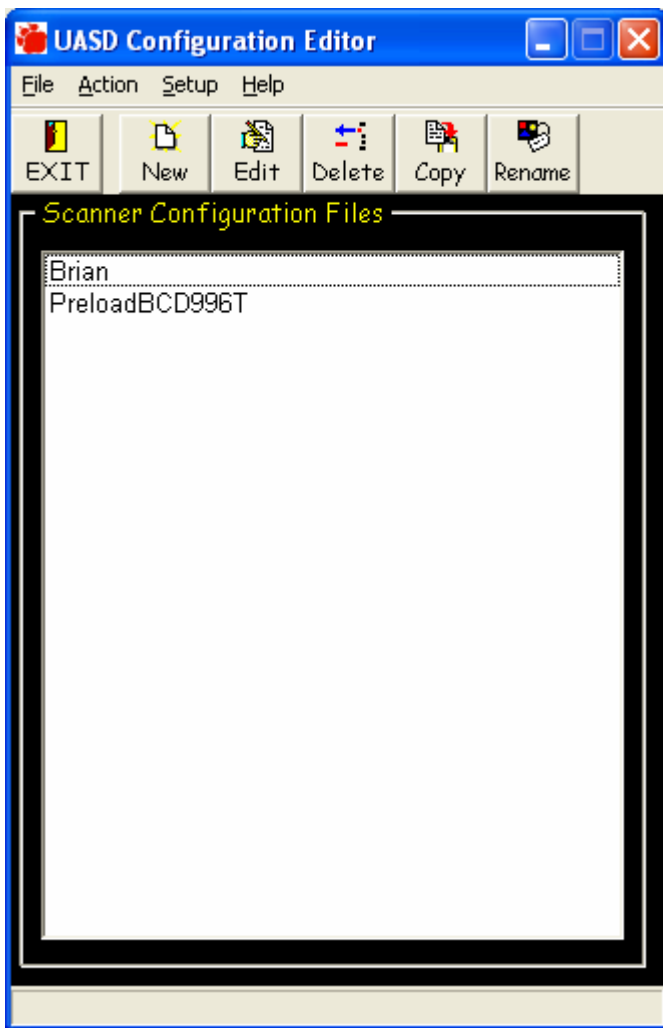


Click Browse next to the System Data Base Folder and browse to where the files you just saved are at:

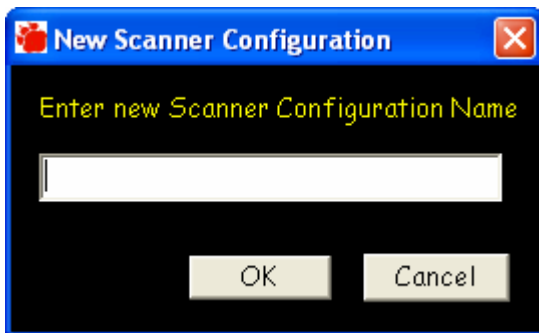


Click OK, now click OK again

The Configuration Editor should now be open:

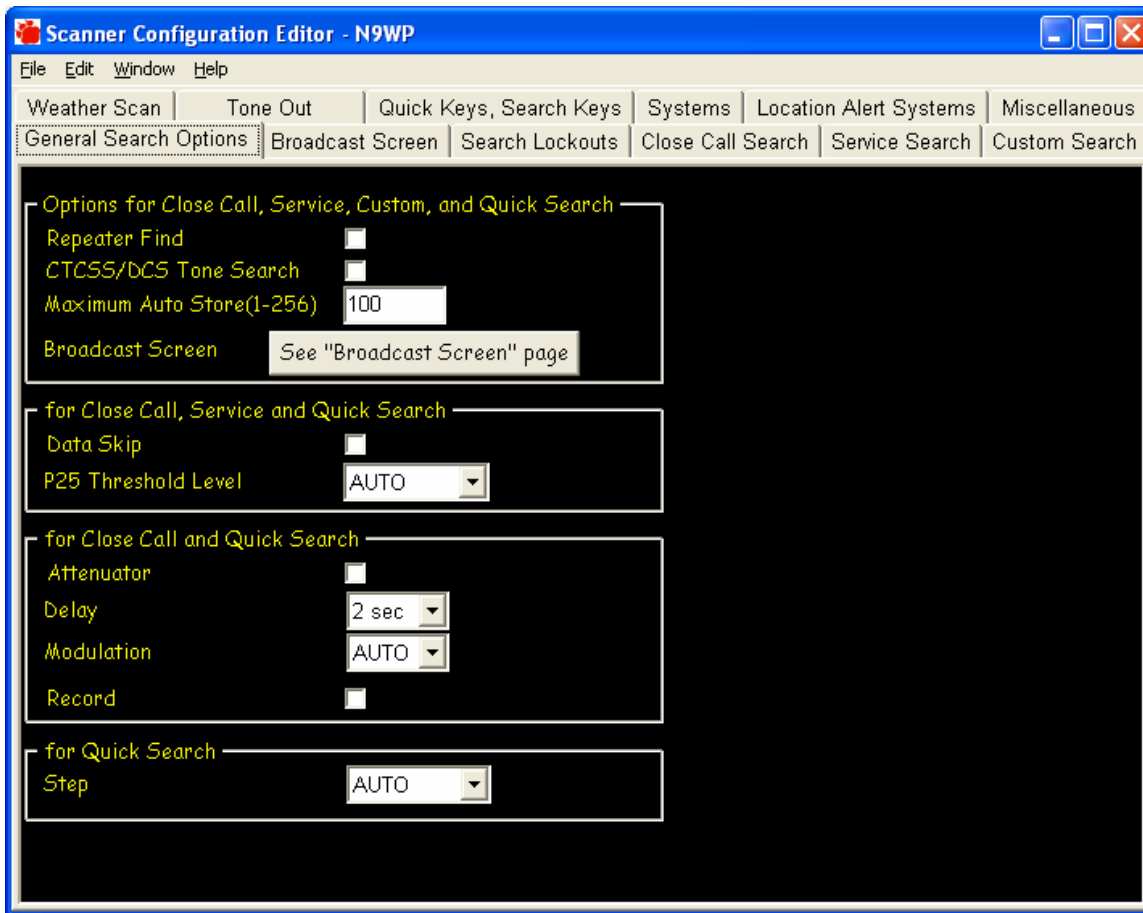


Click New

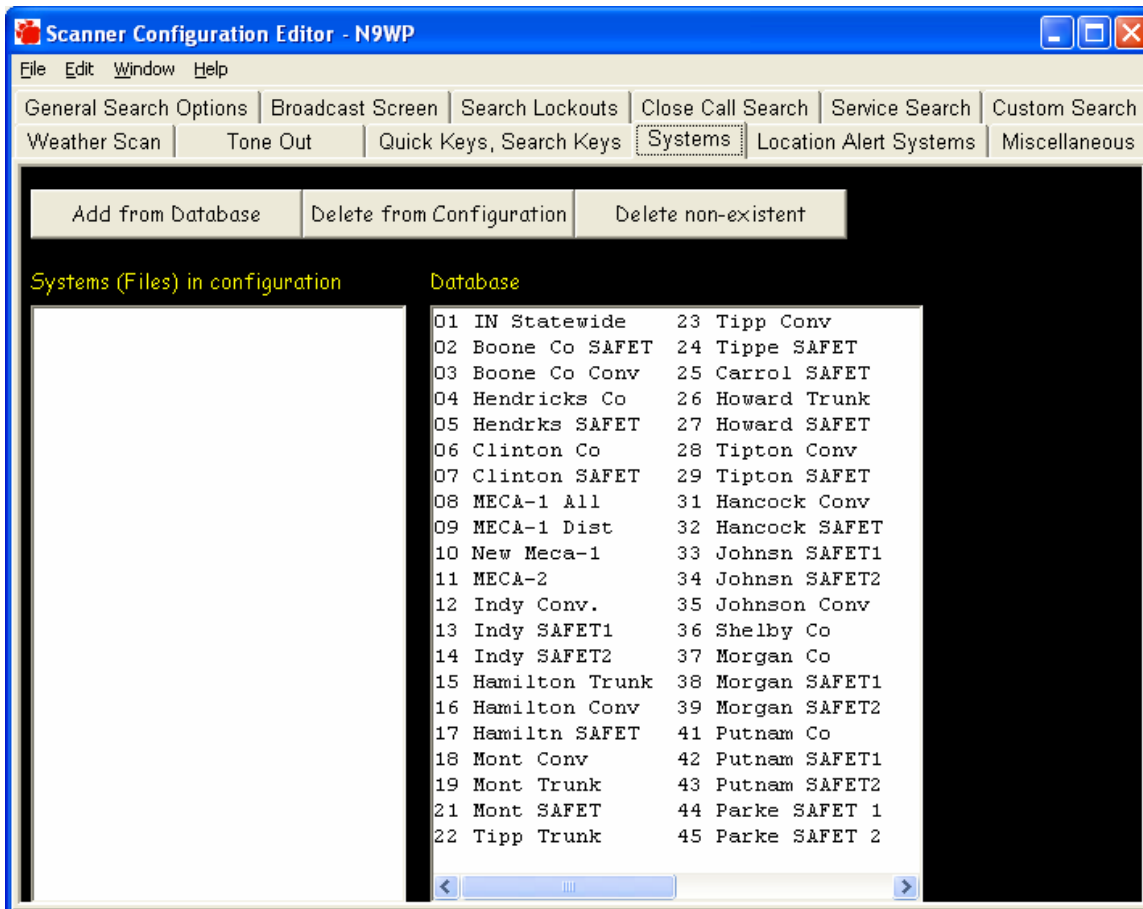


Enter a name, I'll enter N9WP

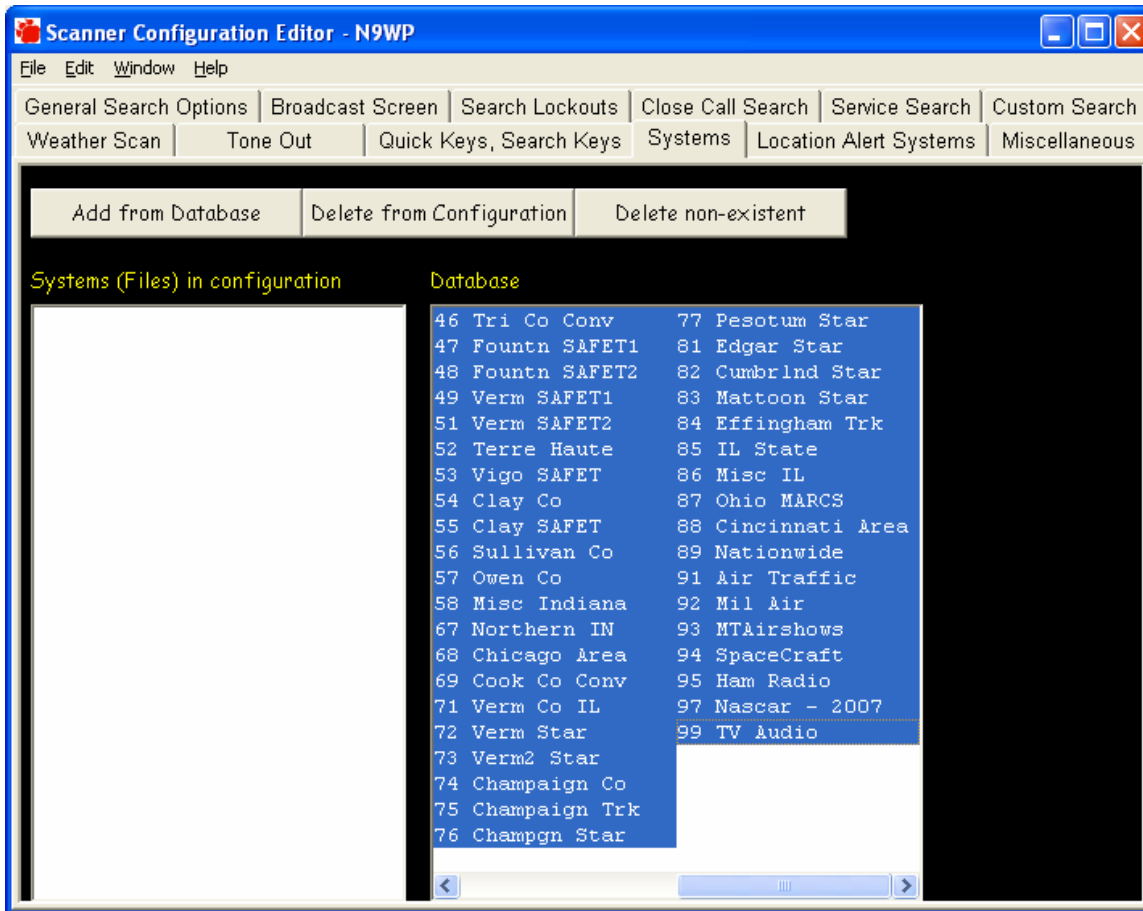
After that, clicking OK will display the Configuration Editor for the name you created:



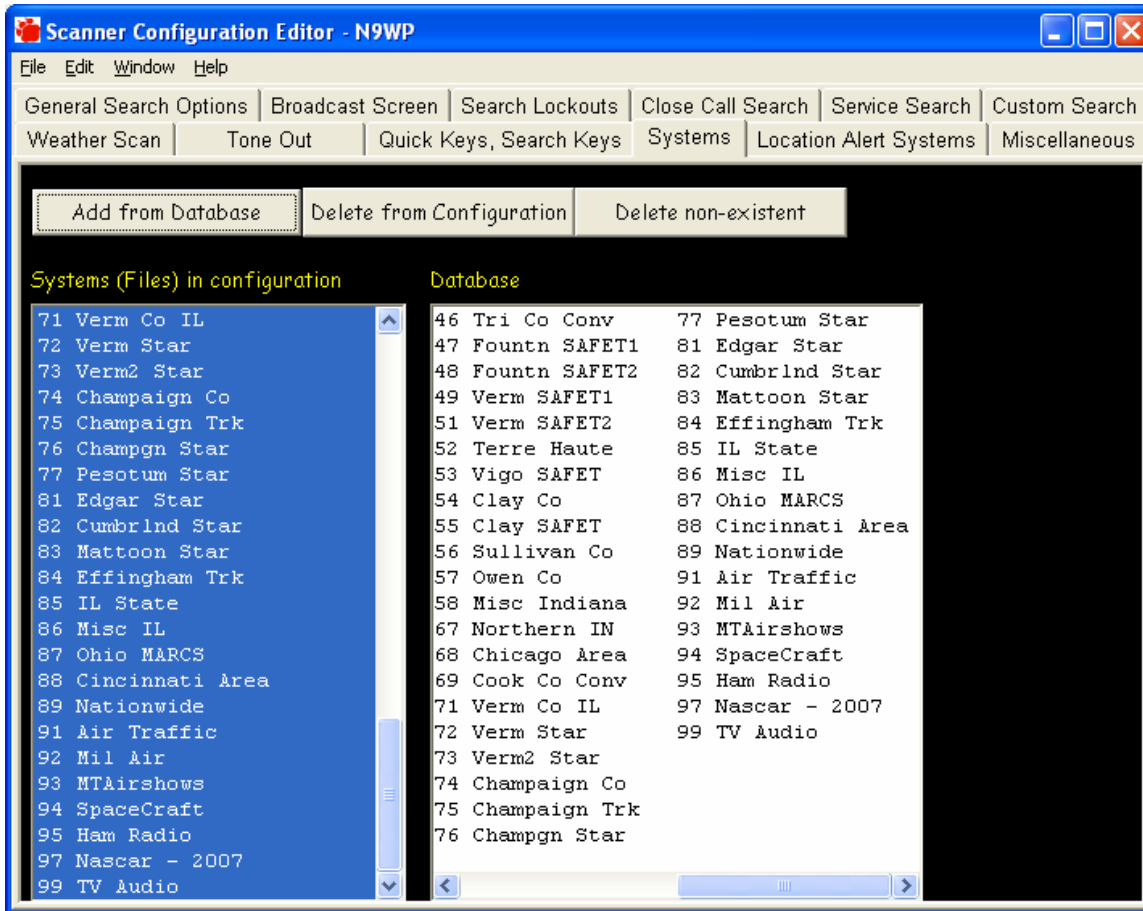
Click on the tab at the top named Systems:



You need to get all the files that are on the right hand side to show on the left hand side. To do this, click 1 file and select Add from Database or you can click on 01 IN Statewide, then scroll over to the right as far as you can go, push and hold in the shift key and click on the last file which in this case is 99 TV Audio, this should highlight all the files in the Database list:



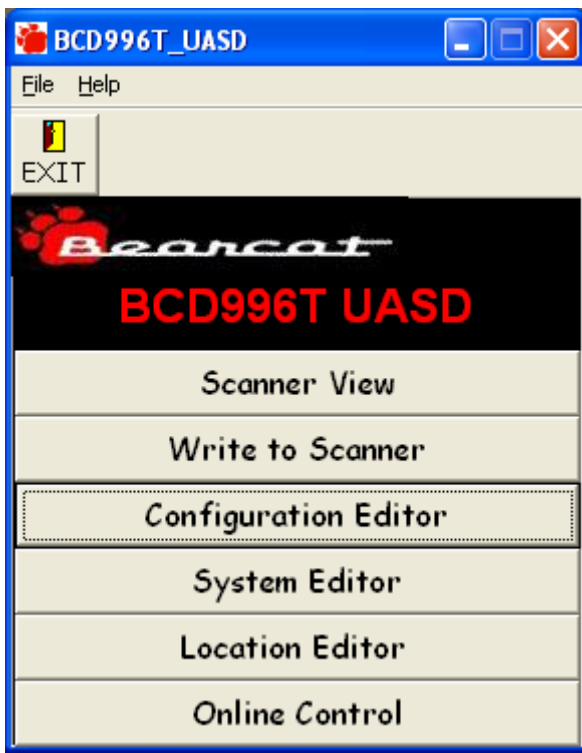
Now click on Add from Database and the files should move to the right side:



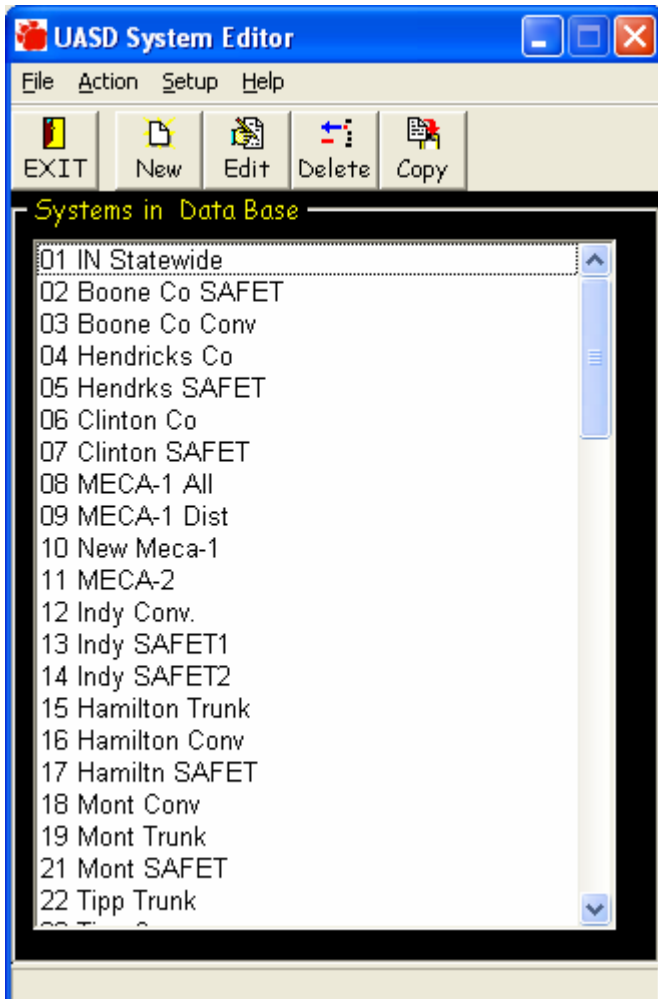
Now click the Red X at the top Right corner of this window and it will ask you to save changes, Click Save.

Close (Exit) the UASD Configuration Editor.

Now you should be back to just the main BCD996T_UASD window:



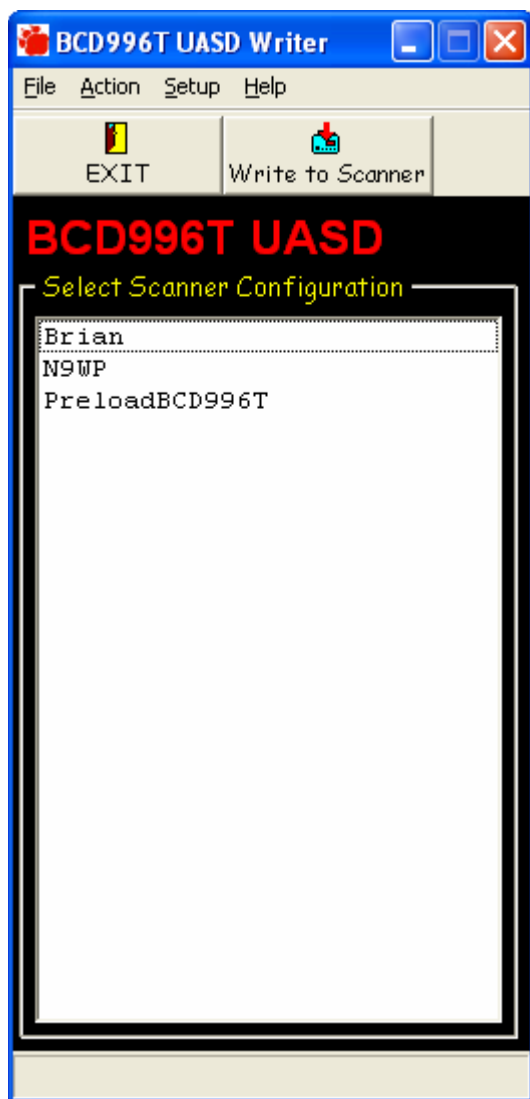
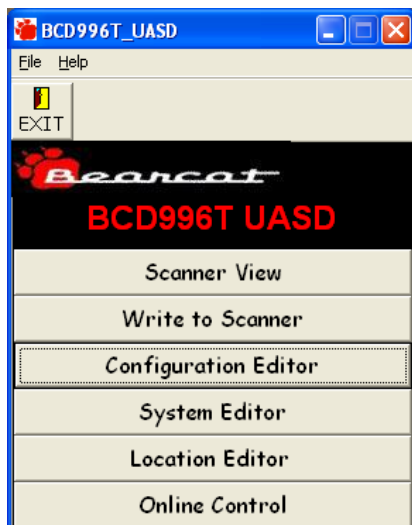
Click on System Editor, you should see all the files in there now:



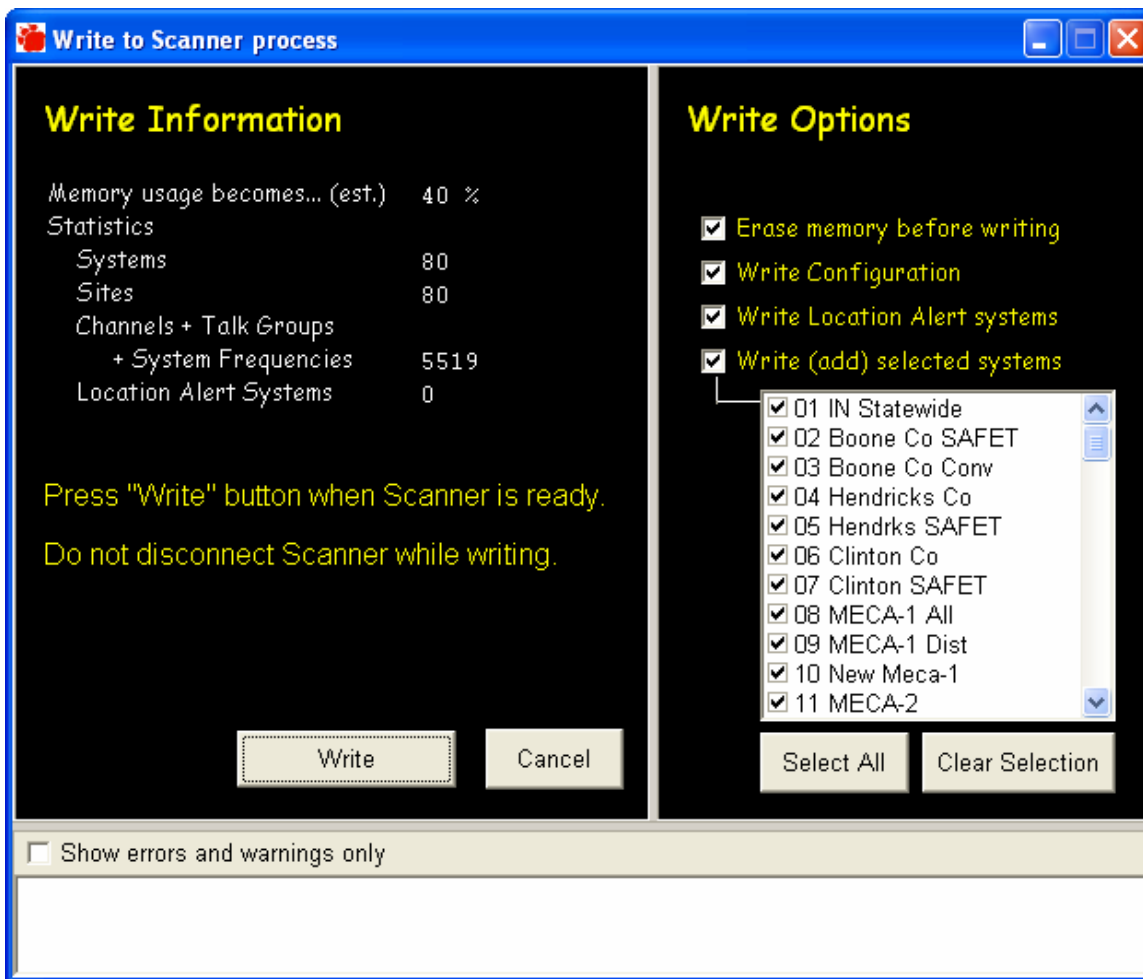
If you do, then we can write these to the scanner. With this window, you can edit systems and change things around, just double click on one of the files and poke around a little bit.

Go ahead and Exit the UASD System Editor

On the main BCD996T_UASD window click Write to Scanner:



You need to select the file you just created, like mine, I will highlight N9WP and then click Write to Scanner:



If everything looks like it does in the above screen and the scanner is turned on, click on Write. You can uncheck Write Location Alert System since we haven't covered that in this document and that is only used if you have your scanner mobile with a GPS hooked up to it. When you click on Write, it will warn you that you are about to erase everything in the scanner, go ahead and click ok.

Once that is complete, close that window and press Hold/Resume button on your scanner. It will probably display "nothing to scan". This is where you need to push 1 to turn on "01 IN Statewide", now it should be scanning that system. Now press the numbers of the systems you wish to listen to, I've numbered the usd files accordingly. Pressing 2 will turn on the 02 Boone Co SAFET system. If the number is higher then 9, you will need to press the period button and then that number. If you want to turn on say the 15 Hamilton Trunk system, push (period) . 1 5 The same goes for turning systems back off. The "10 New Meca-1 system is labeled 10 but is actually 0 (zero) to turn on and off. So to listen to that, push the number 0.

If you need to know what all the systems are, you can click on the System Editor to see.

Once you are scanning away and say you just want to listen to Indianapolis Metro PD N and Lawrence PD and maybe a couple other systems in that area, this is how to do that. All the systems have groups in them and you can click and play around in the system Editor to discover these. But to turn on just what you want to hear, I would scan 01 IN Statewide, so press 1 on the scanner to scan that system, if it's not already scanning it. then press 9 on the scanner to turn on 09 MECA-1 Dist and to narrow down the system to just scan the group you want to scan, press in the big knob on the scanner, an F will appear in the corner of the scanner screen for about 2 seconds, during that time, press 1, then press the knob button again and press 2. Skip pressing 3 because that's what you are wanting to listen to press the knob and press 4, continue that until you get done with doing that with the number 9. There you should just be scanning system 1 and system 9 but with system 9, only the area you want to hear. Now to turn on

Hamilton County trunk system, press the period (.) and 1 and then 5 for 15. 15 Hamilton Trunk should now be scanning too.

Some counties use the SAFET system and the Indiana State Police does too. So if your interested in listening to those system, just find the one for your area and press the number associated with that system.

Enjoy.

N9WP